

[2016-NEW! Exam 70-412 391q VCE and PDF Dumps Updated By PassLeader For Free (Question 1 – Question 30)

How to pass 70-412 exam for the first try? PassLeader now is offering the free new version of 70-412 exam dumps. The new 391q 70-412 exam questions cover all the new added questions, which will help you to get well prepared for the exam 70-412, our premium 70-412 PDF dumps and VCE dumps are the best study materials for preparing the 70-412 exam. Come to [passleader.com](#) to get the valid 391q 70-412 braindumps with free version VCE simulator, you will get success in the real 70-412 exam for your first try. keywords: 70-412 exam,391q 70-412 exam dumps,391q 70-412 exam questions,70-412 pdf dumps,70-412 vce dumps,70-412 braindumps,70-412 practice tests,70-412 study guide,Configuring Advanced Windows Server 2012 R2 Services Exam P.S. Download Free 70-412 PDF Dumps and Preview PassLeader 70-412 VCE Dumps At The End Of This Post!!! (Ctrl+End) QUESTION 1Your network contains an Active Directory domain named adatum.com. The domain contains two domain controllers that run Windows Server 2012 R2. The domain controllers are configured as shown in the following table.

Domain controller name	
DC1	Domain
DC2	Read-o

You log on to DC1 by using a user account that is a member of the Domain Admins group, and then you create a new user account named User1. You need to prepopulate the password for User1 on DC2. What should you do first? A. Connect to DC2 from Active Directory Users and Computers.B. Add DC2 to the Allowed RODC Password Replication Policy group.C. Add the User1 account to the Allowed RODC Password Replication Policy group.D. Run Active Directory Users and Computers as a member of the Enterprise Admins group. Answer: C QUESTION 2Your company has offices in Montreal, New York, and Amsterdam. The network contains an Active Directory forest named contoso.com. An Active Directory site exists for each office. All of the sites connect to each other by using the DEFAULTSITELINK site link. You need to ensure that only between 20:00 and 08:00, the domain controllers in the Montreal office replicate the Active Directory changes to the domain controllers in the Amsterdam office. The solution must ensure that the domain controllers in the Montreal and the New York offices can replicate the Active Directory changes any time of day. What should you do? A. Create a new site link that contains Montreal and Amsterdam. Remove Amsterdam from DEFAULTSITELINK. Modify the schedule of DEFAULTSITELINK.B. Create a new site link that contains Montreal and Amsterdam. Create a new site link bridge.Modify the schedule of DEFAU LTSITELINK.C. Create a new site link that contains Montreal and Amsterdam. Remove Amsterdam from DEFAULTSITELINK. Modify the schedule of the new site link.D. Create a new site link that contains Montreal and Amsterdam. Create a new site link bridge.Modify the schedule of the new site link. Answer: C QUESTION 3Your network contains two Active Directory forests named contoso.com and adatum.com. A two-way forest trust exists between the forests. The contoso.com forest contains an enterprise certification authority (CA) named Server1. You implement cross-forest certificate enrollment between the contoso.com forest and the adatum.com forest. On Server1, you create a new certificate template named Template1. You need to ensure that users in the adatum.com forest can request certificates that are based on Template1. Which tool should you use? A. DumpADO.ps1B. RepadminC. Add-CATemplateD. CertutilE. PKISync.ps1 Answer: E QUESTION 4You have a server named Server1 that runs Windows Server 2012 R2. Server1 has the Windows Deployment Services server role installed. You back up Server1 each day by using Windows Server Backup. The disk array on Server1 fails. You replace the disk array. You need to restore Server1 as quickly as possible. What should you do? A. Start Server1 from the Windows Server 2012 R2 installation media.B. Start Server1and press F8.C. Start Server1 and press Shift+F8.D. Start Server1 by using the PXE. Answer: A QUESTION 5Your network contains two servers named Server1 and Server2 that run Windows Server 2012 R2. Both servers have the Hyper-V server role installed. Server1 and Server2 are located in different offices. The offices connect to each other by using a high-latency WAN link. Server2 hosts a virtual machine named VM1. You need to ensure that you can start VM1 on Server1 if Server2 fails. The solution must minimize hardware costs. What should you do? A. On Server1, install the Multipath I/O (MPIO) feature. Modify the storage location of the VHDs for VM1.B. From the Hyper-V Settings of Server2, modify the Replication Configuration settings. Enable replication for VM1.C. On Server2, install the Multipath I/O (MPIO) feature. Modify the storage location of the VHDs for VM1.D. From the Hyper-V Settings of Server1, modify the Replication Configuration settings. Enable replication for VM1. Answer: D QUESTION 6Your network contains an Active Directory domain named contoso.com. You deploy a server named Server1 that runs Windows Server 2012 R2. A local administrator installs the Active Directory Rights Management Services server role on Server1. You need to ensure that AD RMS clients can discover the AD RMS cluster automatically. What should you do? A. Run the Active Directory Rights Management Services console by using an account that is a member of the Schema Admins group, and then configure the proxy settings.B. Run

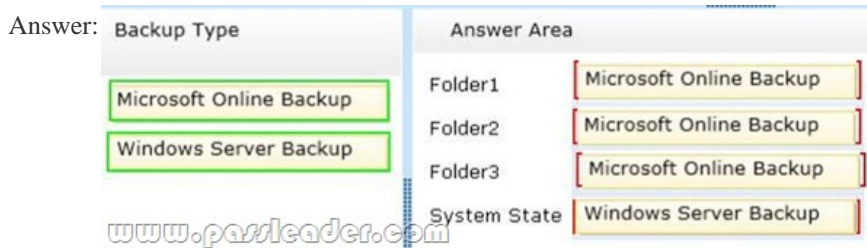
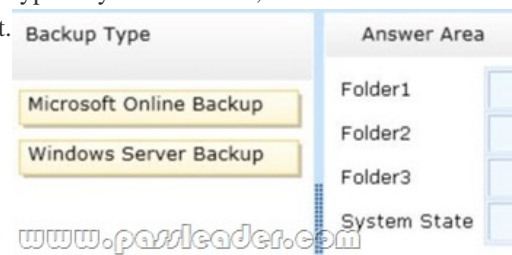
the Active Directory Rights Management Services console by using an account that is a member of the Schema Admins group, and then register the Service Connection Point (SCP).
 C. Run the Active Directory Rights Management Services console by using an account that is a member of the Enterprise Admins group, and then register the Service Connection Point (SCP).
 D. Run the Active Directory Rights Management Services console by using an account that is a member of the Enterprise Admins group, and then configure the proxy settings.
 Answer: C

QUESTION 7 Your network contains an Active Directory domain named contoso.com. The domain contains three servers named Server1, Server2, and Server3 that run Windows Server 2012 R2. All three servers have the Hyper-V server role installed and the Failover Clustering feature installed. Server1 and Server2 are nodes in a failover cluster named Cluster1. Several highly available virtual machines run on Cluster1. Cluster1 has the Hyper-V Replica Broker role installed. The Hyper-V Replica Broker currently runs on Server1. Server3 currently has no virtual machines. You need to configure Cluster1 to be a replica server for Server3 and Server3 to be a replica server for Cluster1. Which two tools should you use? (Each correct answer presents part of the solution. Choose two.)
 A. The Hyper-V Manager console connected to Server3
 B. The Failover Cluster Manager console connected to Server3
 C. The Hyper-V Manager console connected to Server1
 D. The Failover Cluster Manager console connected to Cluster1
 E. The Hyper-V Manager console connected to Server2
 Answer: AD

QUESTION 8 You have a file server named Server1 that runs Windows Server 2012 R2. The folders on Server1 are configured as shown in the following table.

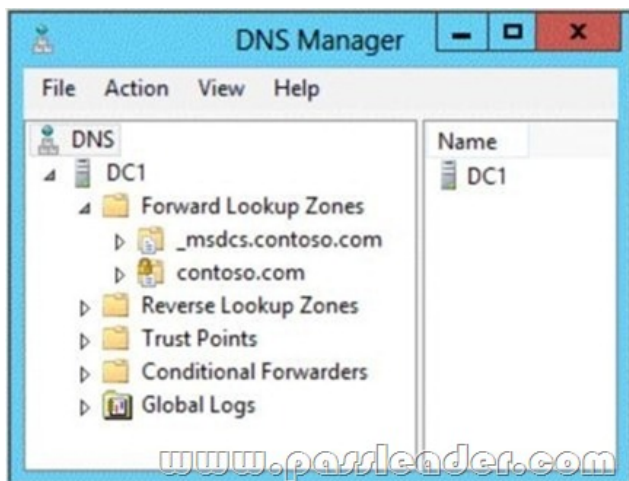
Folder
Folder1
Folder2
Folder3

A new corporate policy states that backups must use Microsoft Online Backup whenever possible. You need to identify which technology you must use to back up Server1. The solution must use Microsoft Online Backup whenever possible. What should you identify? To answer, drag the appropriate backup type to the correct location or locations. Each backup type may be used once, more than once, or not at all. You may need to drag the split bar between panes or scroll to view content.



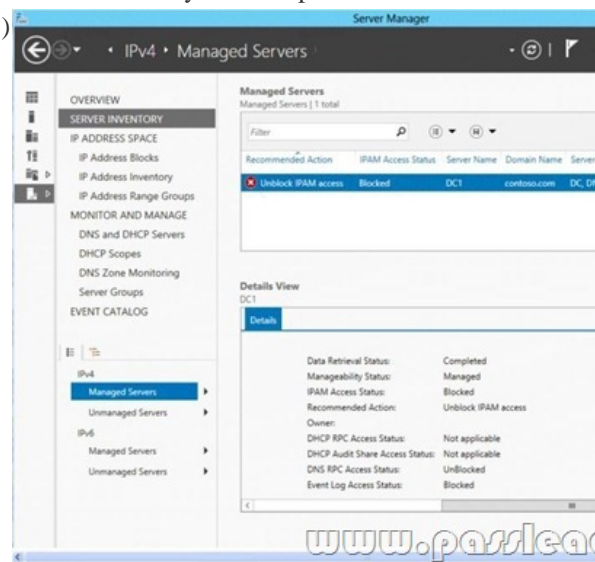
QUESTION 9 You have a DNS server named Server1 that runs Windows Server 2012 R2. Server1 has a signed zone for contoso.com. You need to configure DNS clients to perform DNSSEC validation for the contoso.com DNS domain. What should you configure?
 A. The Network Connection settings
 B. A Name Resolution Policy
 C. The Network Location settings
 D. The DNS Client settings
 Answer: B

QUESTION 10 Your network contains an Active Directory domain named contoso.com. The domain contains a domain controller named DC1 that runs Windows Server 2012 R2. On DC1, you open DNS Manager as shown in the exhibit. (Click the Exhibit button.)



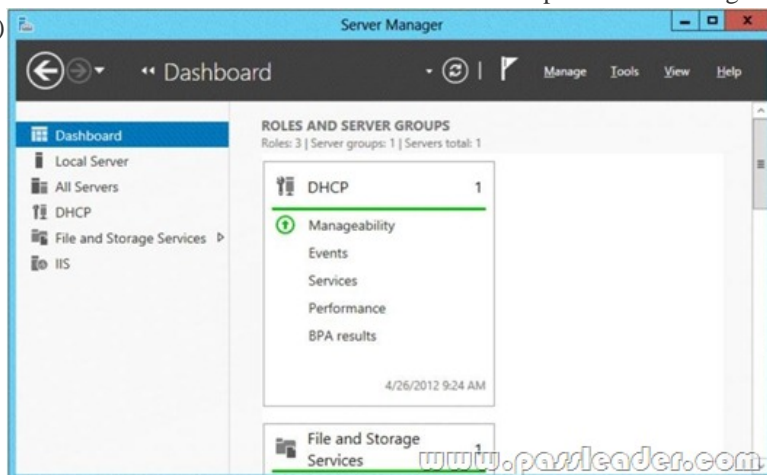
You need to change the replication scope of the contoso.com zone. What should you do before you change the replication scope? A. Modify the Zone Transfers settings. B. Add DC1 to the Name Servers list. C. Add your user account to the Security settings of the zone. D. Unsign the zone. Answer: D

QUESTION 11 Your network contains an Active Directory domain named contoso.com. The domain contains a domain controller named DC1 and a member server named Server1. Server1 has the IP Address Management (IPAM) Server feature installed. On Dc1, you configure Windows Firewall to allow all of the necessary inbound ports for IPAM. On Server1, you open Server Manager as shown in the exhibit. (Click the Exhibit button.)



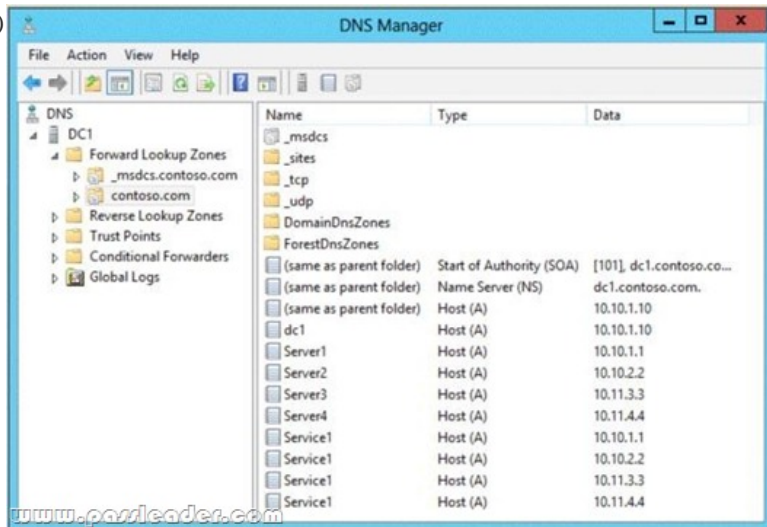
You need to ensure that you can use IPAM on Server1 to manage DNS on DC1. What should you do? A. Modify the outbound firewall rules on Server1. B. Modify the inbound firewall rules on Server1. C. Add Server1 to the Remote Management Users group. D. Add Server1 to the Event Log Readers group. Answer: D

QUESTION 12 Your network contains an Active Directory domain named contoso.com. The domain contains servers named Server1 and Server2 that run Windows Server 2012 R2. Server1 has the IP Address Management (IPAM) Server feature installed. You install the IPAM client on Server2. You open Server Manager on Server2 as shown in the exhibit. (Click the Exhibit button.)



You need to manage IPAM from Server2. What should you do first? A. On Server1, add the Server2 computer account to the IPAM MSM Administrators group. B. On Server2, open Computer Management and connect to Server1. C. On Server2, add Server1 to Server Manager. D. On Server1, add the Server2 computer account to the IPAM ASM Administrators group. Answer: C

QUESTION 13 Your network contains an Active Directory domain named contoso.com. The domain contains a domain controller named Dc1. DC1 has the DNS Server server role installed. The network has two sites named Site1 and Site2. Site1 uses 10.10.0.0/16 IP addresses and Site2 uses 10.11.0.0/16 IP addresses. All computers use DC1 as their DNS server. The domain contains four servers named Server1, Server2, Server3, and Server4. All of the servers run a service named Service1. DNS host records are configured as shown in the exhibit. (Click the Exhibit button.)



You discover that computers from the 10.10.1.0/24 network always resolve Service1 to the IP address of Server1. You need to configure DNS on DC1 to distribute computers in Site1 between Server1 and Server2 when the computers attempt to resolve Service1. What should you run on DC1? A. dnscmd /config /bindsecondaries 1B. dnscmd /config /localnetpriority 0C. dnscmd /config /localnetprioritynetmask 0x0000ffffD. dnscmd /config /roundrobin 0 Answer: C

QUESTION 14 Your network contains an Active Directory domain named contoso.com. The domain contains a main office and a branch office. An Active Directory site exists for each office. The domain contains two servers named Server1 and Server2 that run Windows Server 2012 R2. Both servers have the DHCP Server server role installed. Server1 is located in the main office site. Server2 is located in the branch office site. Server1 provides IPv4 addresses to the client computers in the main office site. Server2 provides IPv4 addresses to the client computers in the branch office site. You need to ensure that if either Server1 or Server2 are offline, the client computers can still obtain IPv4 addresses. The solution must meet the following requirements:- The storage location of the DHCP databases must not be a single point of failure.- Server1 must provide IPv4 addresses to the client computers in the branch office site only if Server2 is offline.- Server2 must provide IPv4 addresses to the client computers in the main office site only if Server1 is offline. Which configuration should you use? A. load sharing mode failover partners B. a failover cluster C. hot standby mode failover partners D. a Network Load Balancing (NLB) cluster Answer: C

QUESTION 15 You have a DHCP server named Server1. Server1 has an IP address 192.168.1.2 is located on a subnet that has a network ID of 192.168.1.0/24. On Server1, you create the scopes shown in the following table

Scope name	Network ID
Scope1	192.168.1.0/24
Scope2	192.168.2.0/24

You need to ensure that Server1 can assign IP addresses from both scopes to the DHCP clients on the local subnet. What should you create on Server1? A. A scope B. A superscope C. A split-scope D. A multicast scope Answer: B

QUESTION 16 Your network contains servers that run Windows Server 2012 R2. The network contains a large number of iSCSI storage locations and iSCSI clients. You need to deploy a central repository that can discover and list iSCSI resources on the network automatically. Which feature should you deploy? A. the Windows Standards-Based Storage Management feature B. the iSCSI Target Server role service C. the iSCSI Target Storage Provider feature D. the iSNS Server service feature Answer: D

QUESTION 17 Your network contains an Active Directory domain named contoso.com. The domain contains a file server named Server1. All servers run Windows Server 2012 R2. All domain user accounts have the Division attribute automatically populated as part of the user

provisioning process. The Support for Dynamic Access Control and Kerberos armoring policy is enabled for the domain. You need to control access to the file shares on Server1 based on the values in the Division attribute and the Division resource property. Which three actions should you perform in sequence?

Actions	Answer Area
From Active Directory Administrative Center, create a reference resource property.	www.passleader.com
From Active Directory Administrative Center, create a resource property list.	
On the shared folders, set the classification value.	
From Active Directory Administrative Center, create a claim type.	
From Active Directory Users and Computers, configure the Delegation settings of Server1.	

Answer:

Actions	Answer Area
From Active Directory Administrative Center, create a reference resource property.	From Active Directory Administrative Center, create a claim type.
From Active Directory Administrative Center, create a resource property list.	From Active Directory Administrative Center, create a reference resource property.
On the shared folders, set the classification value.	On the shared folders, set the classification value.
From Active Directory Administrative Center, create a claim type.	
From Active Directory Users and Computers, configure the Delegation settings of Server1.	

www.passleader.com

QUESTION 18Your network contains two Active Directory forests named contoso.com and fabrikam.com. The contoso.com forest contains two domains named corp.contoso.com and contoso.com. You establish a two-way forest trust between contoso.com and fabrikam.com. Users from the corp.contoso.com domain report that they cannot log on to client computers in the fabrikam.com domain by using their corp.contoso.com user account. When they try to log on, they receive following error message:"The computer you are signing into is protected by an authentication firewall. The specified account is not allowed to authenticate to the computer." Corp.contoso.com users can log on successfully to client computers in the contoso.com domain by using their corp.contoso.com user account credentials. You need to allow users from the corp.contoso.com domain to log on to the client computers in the fabrikam.com forest. What should you do? A. Configure Windows Firewall with Advanced Security.B. Enable SID history.C. Configure forest-wide authentication.D. Instruct the users to log on by using a user principal name (UPN). Answer: C

QUESTION 19Your network contains two servers named Server1 and Server2 that run Windows Server 2012 R2. Both servers have the Hyper-V server role installed. The servers have the hardware configurations shown in the following table.

Server name	Configuration
Server1	<ul style="list-style-type: none"> •AMD processors •16 processor cores •32 GB of RAM •4 TB of storage
Server2	<ul style="list-style-type: none"> •Intel processor •16 processor cores •64 GB of RAM •8 TB of storage

www.passleader.com

Server1 hosts five virtual machines that run Windows Server 2012 R2. You need to move the virtual machines from Server1 to Server2. The solution must minimize downtime. What should you do for each virtual machine? A. Export the virtual machines from Server1 and import the virtual machines to Server2.B. Perform a live migration.C. Perform a quick migration.D. Perform a storage migration. Answer: A

QUESTION 20Your network contains an Active Directory domain named contoso.com. The domain contains two servers named Server1 and Server2. Both servers have the Hyper-V server role installed. You plan to replicate virtual machines between Server1 and Server2. The replication will be encrypted by using Secure Sockets Layer (SSL). You need to request a certificate on Server1 to ensure that the virtual machine replication is encrypted. Which two intended purposes should the certificate for Server1 contain? (Each correct answer presents part of the solution. Choose two.) A. Client AuthenticationB. Kernel Mode Code SigningC. Server AuthenticationD. IP Security end systemE. KDC Authentication Answer: AC

QUESTION 21 Your network contains an Active Directory domain named contoso.com. The domain contains two member servers named Server1 and Server2 that run Windows Server 2012 R2. Both servers have the Hyper-V server role installed. The network contains an enterprise certification authority (CA). All servers are enrolled automatically for a certificate-based on the Computer certificate template. On Server1, you have a virtual machine named VM1. VM1 is replicated to Server2. You need to encrypt the replication of VM1. Which two actions should you perform? (Each correct answer presents part of the solution. Choose two.) A. On Server1, modify the settings of VM1. B. On Server2, modify the settings of VM1. C. On Server2, modify the Hyper-V Settings. D. On Server1, modify the Hyper-V Settings. E. On Server1, modify the settings of the virtual switch to which VM1 is connected. F. On Server2, modify the settings of the virtual switch to which VM1 is connected. Answer: AC

QUESTION 22 Your network contains an Active Directory domain named contoso.com. The domain contains a file server named Server1 that runs Windows Server 2012 R2. You create a user account named User1 in the domain. You need to ensure that User1 can use Windows Server Backup to back up Server1. The solution must minimize the number of administrative rights assigned to User1. What should you do? A. Add User1 to the Backup Operators group. B. Add User1 to the Power Users group. C. Assign User1 the Backup files and directories user right and the Restore files and directories user right. D. Assign User1 the Backup files and directories user right. Answer: D

QUESTION 23 You have a server named Server1 that runs Windows Server 2012 R2 and is used for testing. A developer at your company creates and installs an unsigned kernel-mode driver on Server1. The developer reports that Server1 will no longer start. You need to ensure that the developer can test the new driver. The solution must minimize the amount of data loss. Which Advanced Boot Option should you select? A. Disable Driver Signature Enforcement. B. Disable automatic restart on system failure. C. Last Known Good Configuration (advanced). D. Repair Your Computer. Answer: A

QUESTION 24 Hotspot Question Your network contains an Active Directory domain named contoso.com. You have a Dynamic Access Control policy named Policy1. You create a new Central Access Rule named Rule1. You need to add Rule1 to Policy1. What command should you run? To answer, select the appropriate options in the answer area.

Answer Area



Answer:

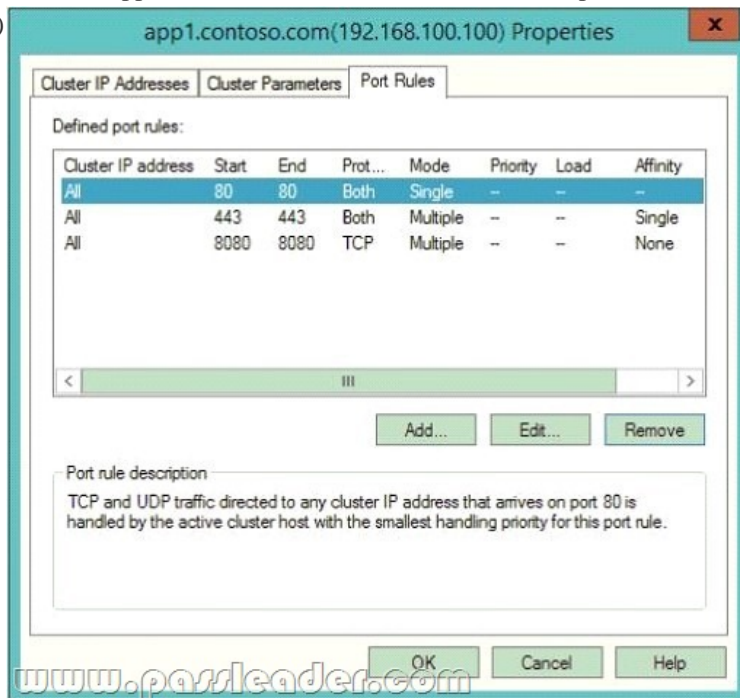
Answer Area



QUESTION 25 Your network contains an Active Directory domain named contoso.com. The domain contains two member servers named Server1 and Server2. All servers run Windows Server 2012 R2. Server1 and Server2 have the Failover Clustering feature installed. The servers are configured as nodes in a failover cluster named Cluster1. You add two additional nodes in Cluster1. You have a folder named Folder1 on Server1 that hosts application data. Folder1 is a folder target in a Distributed File System (DFS) namespace. You need to provide highly available access to Folder1. The solution must support DFS Replication to Folder1. What should you configure? A. Affinity-None. B. Affinity-Single. C. The cluster quorum settings. D. The failover settings. E. A file server for general use. F. The Handling priority. G. The host priority. H. Live migration. I. The possible owner. J. The preferred owner. K. Quick migration. L. The Scale-Out File Server. Answer: E

QUESTION 26 Your network contains an Active Directory domain named contoso.com. The domain contains two member servers named Server1 and Server2. All servers run Windows Server 2012 R2. Server1 and Server2 have the Network Load Balancing (NLB) feature installed. The servers are configured as nodes in an NLB cluster named Cluster1. Port rules are configured for all clustered applications. You need to ensure that Server2 handles all client requests to the cluster that are NOT covered by a port rule. What should you configure? A. Affinity-None. B. Affinity-Single. C. The cluster quorum settings. D. The failover settings. E. A file server for general use. F. The Handling priority. G. The host priority. H. Live migration. I. The possible owner. J. The preferred owner. K. Quick migration. L. The Scale-Out

File Server Answer: G QUESTION 27 Hotspot Question Your network contains two Web servers named Server1 and Server2. Both servers run Windows Server 2012 R2. Server1 and Server2 are nodes in a Network Load Balancing (NLB) cluster. The NLB cluster contains an application named App1 that is accessed by using the name appl.contoso.com. The NLB cluster has the port rules configured as shown in the exhibit. (Click the Exhibit button.)



To answer, complete each statement according to the information presented in the exhibit. Each correct selection is worth one point.

Answer Area

When users access the URL http://app1.contoso.com, ...

- the connections fail.
- the connections are processed by a single server.
- the connections split equally among all of the servers in the cluster.

If one of the nodes in the cluster fails, App1 is ... available.

- always
- never
- sometimes

Answer:

Answer Area

When users access the URL http://app1.contoso.com, ...

- the connections fail.
- the connections are processed by a single server.
- the connections split equally among all of the servers in the cluster.

If one of the nodes in the cluster fails, App1 is ... available.

- always
- never
- sometimes

QUESTION 28 Your network contains an Active Directory forest. The forest contains two domains named contoso.com and fabrikam.com. The functional level of the forest is Windows Server 2003. You have a domain outside the forest named adatum.com. You need to configure an access solution to meet the following requirements: - Users in adatum.com must be able to access resources in contoso.com. - Users in adatum.com must be prevented from accessing resources in fabrikam.com. - Users in both contoso.com and fabrikam.com must be prevented from accessing resources in adatum.com. What should you create? A. a one-way realm trust from contoso.com to adatum.com B. a one-way realm trust from adatum.com to contoso.com C. a one-way external trust from contoso.com to adatum.com D. a one-way external trust from adatum.com to contoso.com Answer: C QUESTION 29 Your network

contains an Active Directory domain named contoso.com. The domain contains a main office and a branch office. An Active Directory site exists for each office. All domain controllers run Windows Server 2012 R2. The domain contains two domain controllers. DC1 hosts an Active Directory- integrated zone for contoso.com. You add the DNS Server server role to DC2. You discover that the contoso.com DNS zone fails to replicate to DC2. You verify that the domain, schema, and configuration naming contexts replicate from DC1 to DC2. You need to ensure that DC2 replicates the contoso.com zone by using Active Directory replication. Which tool should you use? A. Dnscmd B. Dnslint C. Repadmin D. Ntdsutile E. DNS Manager F. Active Directory Sites and Services G. Active Directory Domains and Trusts H. Active Directory Users and Computers Answer: F

QUESTION 30 Your network contains an Active Directory forest named contoso.com. The forest contains four domains. All servers run Windows Server 2012 R2. Each domain has a user named User1. You have a file server named Server1 that is used to synchronize user folders by using the Work Folders role service. Server1 has a work folder named Sync1. You need to ensure that each user has a separate folder in Sync1. What should you do? A. From Windows Explorer, modify the Sharing properties of Sync1. B. Run the Set-SyncServerSetting cmdlet. C. From File and Storage Services in Server Manager, modify the properties of Sync1. D. Run the Set-SyncShare cmdlet. Answer: D

Download Free 70-412 PDF Dumps From Google Drive: https://drive.google.com/open?id=0B-ob6L_OjGLpfm94alk1eU9xWjFYRkVoNkl0cjRiOXZRRjVhUXNXtklicDdKZDJwRGJCM1k (Explanation For Every Question Is Available!) PassLeader 70-412 VCE Dumps Screenshots:

PassLeader Premium 70-412 VCE

Mark Question 8 of 276 (Exam A, Q237)

Your network contains an Active Directory forest named contoso.com. All servers run Windows Server 2012 R2. The domain contains four servers. The servers are configured as shown in the following table.

Server name	Configuration
DC1	• Domain controller
DC2	• Domain controller • DNS server • DHCP server
DC3	• Domain controller • DHCP server
Server1	• Windows Server Update Services (WSUS) server

You need to deploy IP Address Management (IPAM) to manage DNS and DHCP.

On which server should you install IPAM?

A. DC1
 B. DC2
 C. DC3
 D. Server1

Previous Next Review

PassLeader Premium 70-412 VCE Dumps Preview

Mark Question 13 of 276 (Exam A, Q237)

Your network contains one Active Directory forest named contoso.com. The forest contains two child domains and six domain controllers. The domain controllers are configured as shown in the following table.

Name	Domain	Site
DC1	Contoso.com	Main office
DC2	Contoso.com	Main office
DC3	Contoso.com	Europe office
DC4	Contoso.com	Asia office
DC5	Sales.contoso.com	Main office
DC6	Manufacturing.contoso.com	Main office

You have a trust from contoso.com to another forest named fabrikam.com.

You plan to migrate users from contoso.com to fabrikam.com.

You need to ensure that the users who migrated to fabrikam.com can continue to access shared resources in contoso.com. The solution must not require administrators to modify permissions to shared resources.

What should you use?

A. Set-ADSite
 B. Set-ADReplicationSite
 C. Set-ADDomain

Previous Next Review Show Answer Show List Save Session End Exam

Download New 70-412 VCE Dumps From PassLeader: <http://www.passleader.com/70-412.html> (New Questions Are 100% Available and Wrong Answers Have Been Corrected!!!)